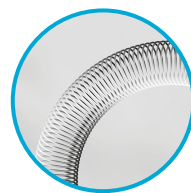
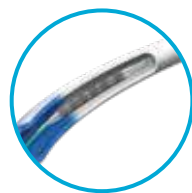


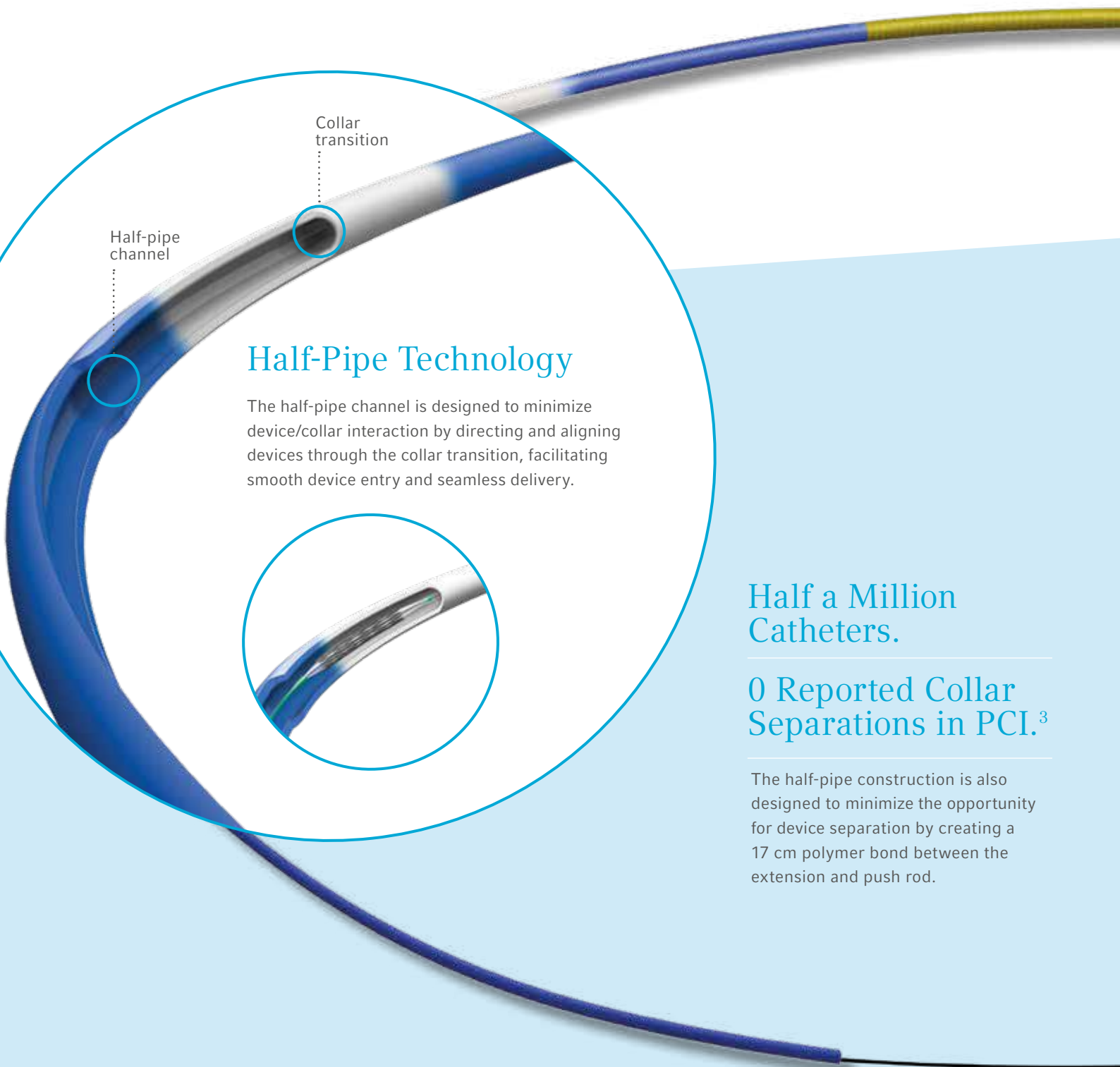
Beyond Tried.  
True.

**GuideLiner V3 Catheter**  
Guide Extension Catheter With Half-Pipe Technology



# Designed to Perform

It's not just the proprietary half-pipe technology that sets the GuideLiner V3 Catheter apart. The coil-reinforced extension is specifically designed to enable dependable deep-seating for the delivery of interventional devices to distal locations.



## Half-Pipe Technology

The half-pipe channel is designed to minimize device/collar interaction by directing and aligning devices through the collar transition, facilitating smooth device entry and seamless delivery.

Half a Million  
Catheters.

0 Reported Collar  
Separations in PCI.<sup>3</sup>

The half-pipe construction is also designed to minimize the opportunity for device separation by creating a 17 cm polymer bond between the extension and push rod.

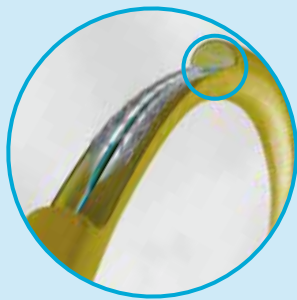
<sup>3</sup> Based upon a review of all device experience reports for coronary usage of GuideLiner V3 Catheters from launch through February 13, 2018. Data on file.

# Tortuosity Tested

From challenging lesions to impossibly acute angles, percutaneous coronary interventions have grown more complex. Since being introduced, GuideLiner catheters have been recognized by interventionalists as essential tools for addressing difficult anatomies.

## Highly Flexible, Coil-Reinforced Guide Extension

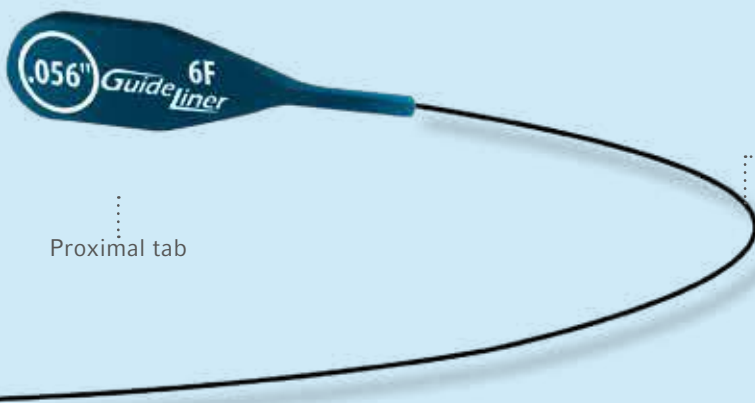
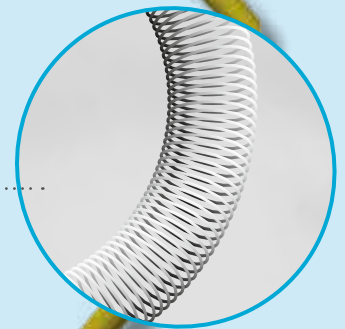
The GuideLiner V3 Catheter's coil-reinforced guide extension provides excellent flexibility and kink resistance allowing delivery through tortuous vessels to reach the target area.



Coil-reinforced guide extension is designed to maintain luminal integrity



Kink resistant<sup>4</sup>

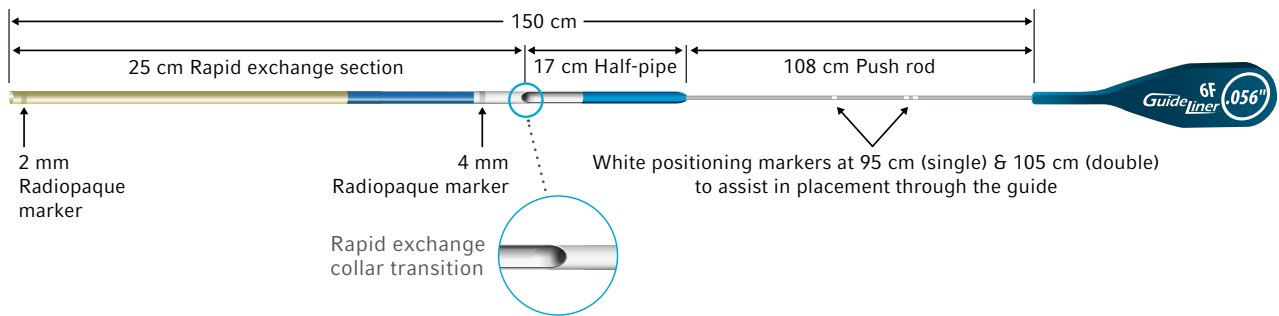


Proximal tab

Stainless steel push rod for strength and kink resistance

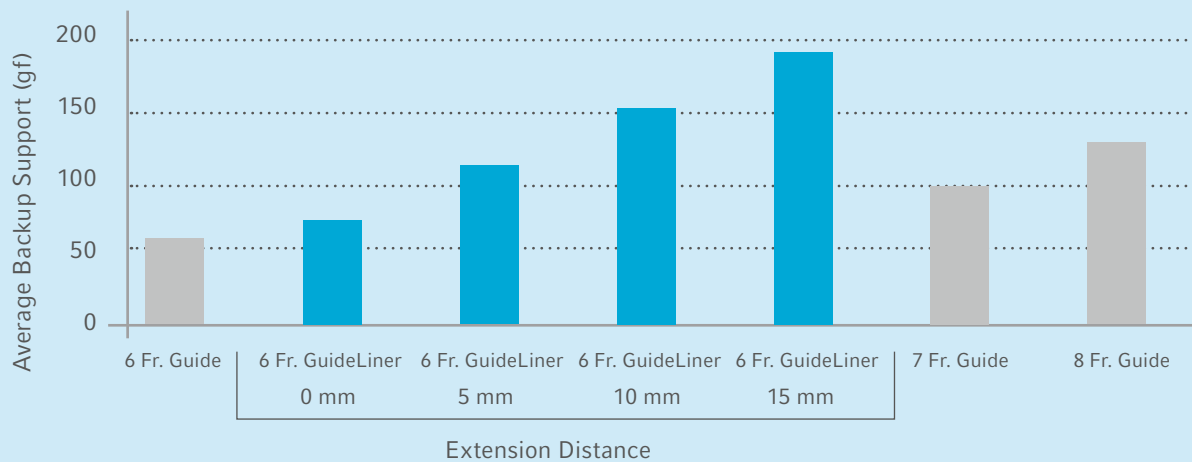
Ribbon wire push rod height (6 Fr.) = 0.012"

# GuideLiner V3 Catheter Dimensions



## Added Backup Support

With as little as 5 mm of extension, bench testing has shown that the GuideLiner V3 Catheter significantly increases the backup support of a 6 Fr. guide catheter.



Testing completed by Vascular Solutions, Inc. Data on file. Comparative data may not be indicative of clinical performance.

## GuideLiner V3 Catheter

GuideLiner Catheters are intended to be used in conjunction with guide catheters to access discrete regions of the coronary and/or peripheral vasculature, and to facilitate placement of interventional devices.

PRODUCT NO.	SIZE	REQUIRED GUIDE CATHETER I.D.	PUSH ROD O.D.	GUIDE EXTENSION I.D.	TIP O.D.	RAPID EXCHANGE LENGTH	WORKING LENGTH
5569	5 Fr.	5 Fr. I.D. $\geq$ 0.056" (1.42 mm)	0.010" (0.25 mm)	0.046" (1.17 mm)	4.0 Fr. (1.35 mm / 0.053")	25 cm	150 cm
5570	5.5 Fr.	6 Fr. I.D. $\geq$ 0.066" (1.68 mm)	0.012" (0.30 mm)	0.051" (1.30 mm)	4.8 Fr. (1.60 mm / 0.063")	25 cm	150 cm
5571	6 Fr.	6 Fr. I.D. $\geq$ 0.070" (1.78 mm)	0.012" (0.30 mm)	0.056" (1.42 mm)	5.1 Fr. (1.70 mm / 0.067")	25 cm	150 cm
5572	7 Fr.	7 Fr. I.D. $\geq$ 0.078" (1.98 mm)	0.012" (0.30 mm)	0.062" (1.57 mm)	5.7 Fr. (1.90 mm / 0.075")	25 cm	150 cm
5573	8 Fr.	8 Fr. I.D. $\geq$ 0.088" (2.24 mm)	0.012" (0.30 mm)	0.071" (1.80 mm)	6.5 Fr. (2.16 mm / 0.085")	25 cm	150 cm

Packaged in quantities of 1 unit per box.

# Beyond Tried. True.

In 2009, the GuideLiner Catheter revolutionized the concept of guide extension, creating new possibilities in interventional cardiology. Now in its third generation, the GuideLiner V3 Catheter continues to build on a history of innovation and performance—one that's been demonstrated with more than half a million catheters in cath labs around the world.<sup>1</sup>

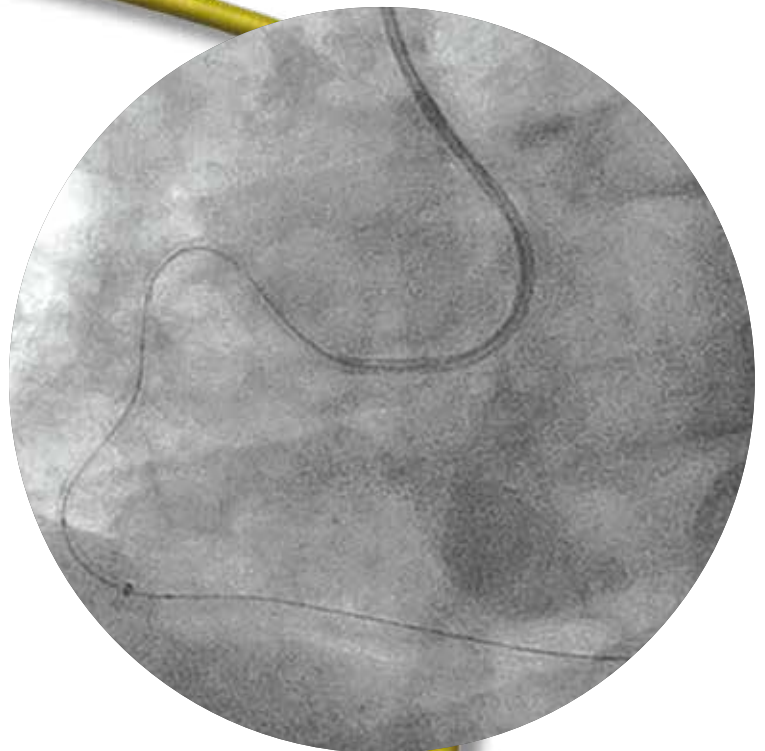
"The GuideLiner gives me the confidence to deliver my chosen balloon or stent to almost any location."<sup>2</sup>

– Michael S. Lee, MD, FACC, FSCAI

"The GuideLiner has become an indispensable part of my tool kit for complex PCI. Simply put, it's a game changer."<sup>2</sup>

– Matthew Price, MD, FACC, FSCAI

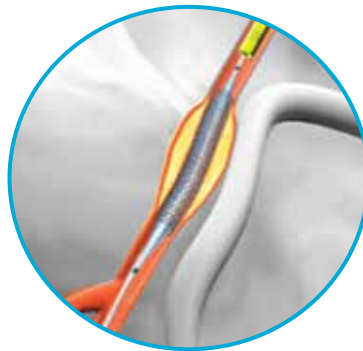
<sup>2</sup> These statements reflect the personal experience and opinion of the physician.



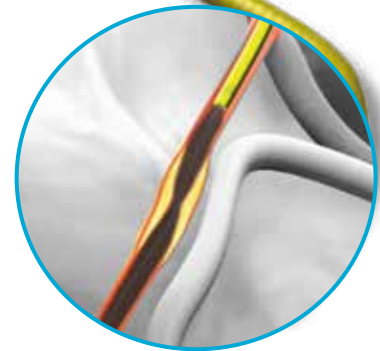
## Multiple Clinical Uses



Coaxial alignment and backup support



Deep-seating for distal device delivery



Selective delivery of contrast

<sup>1</sup> Data on file.

Teleflex is a global provider of medical technologies designed to improve the health and quality of people's lives. We apply purpose-driven innovation – a relentless pursuit of identifying unmet clinical needs – to benefit patients and healthcare providers. Our portfolio is diverse, with solutions in the fields of vascular and interventional access, surgical, anesthesia, cardiac care, urology, emergency medicine and respiratory care. Teleflex employees worldwide are united in the understanding that what we do every day makes a difference. For more information, please visit [teleflex.com](http://teleflex.com).

Teleflex is the home of Arrow, Deknatel, Hudson RCI, LMA, Pilling, Rüschi, UroLift, and Weck – trusted brands united by a common sense of purpose.

### Corporate Office

Phone +1 610 225 6800, 550 E. Swedesford Road, Suite 400, Wayne, PA 19087, USA

### Regional Offices

**United States:** Phone +1 919 544 8000, Toll Free 866 246 6990, [cs@teleflex.com](mailto:cs@teleflex.com), 3015 Carrington Mill Boulevard, Morrisville, NC 27560, USA

**Latin America:** Phone +1 919 433 4999, [la.cs@teleflex.com](mailto:la.cs@teleflex.com), 3015 Carrington Mill Boulevard, Morrisville, NC 27560, USA

**International:** Phone +353 (0)9 06 46 08 00, [orders.intl@teleflex.com](mailto:orders.intl@teleflex.com), Teleflex Medical Europe Ltd., IDA Business and Technology Park, Dublin Road, Athlone, Co Westmeath, Ireland

**Australia** 1300 360 226

**Austria** +43 (0)1 402 47 72

**Belgium** +32 (0)2 333 24 60

**Canada** +1 (0)800 387 9699

**China (Shanghai)** +86 (0)21 6060 7000

**China (Beijing)** +86 (0)10 6418 5699

**Czech Republic** +420 (0)495 759 111

**France** +33 (0)5 62 18 79 40

**Germany** +49 (0)7151 691 3004

**Greece** +30 210 67 77 717

**India** +91 (0)80 4093 4790

**Italy** +39 0362 58911

**Japan** +81 (0)3 6632 3600

**Korea** +82 2 536 7550

**Mexico** +52 55 5002 3500

**Netherlands** +31 (0)88 00 215 00

**New Zealand** 0800 601 100

**Poland** +48 22 4624032

**Portugal** +351 225 491 051

**Singapore** (SEA non-direct sales countries) +65 6439 3000

**Slovak Republic** +421 (0)3377 254 28

**South Africa** +27 (0)11 807 4887

**Spain** +34 91 198 84 31

**Switzerland** +41 (0)31 818 40 90

**United Kingdom** +44 (0)1494 53 27 61

**For more information, please visit [teleflex.com](http://teleflex.com)**

Please see the Instructions for Use for a complete listing of the indications, contraindications, warnings and precautions.

Teleflex, the Teleflex logo, Arrow, Deknatel, GuideLiner, Hudson RCI, LMA, Pilling, Rüschi, UroLift and Weck are trademarks or registered trademarks of Teleflex Incorporated or its affiliates, in the U.S. and/or other countries.

Information in this material is not a substitute for the product Instructions for Use. Not all products may be available in all countries. Please contact your local representative. Revised: 12/2018.

© 2019 Teleflex Incorporated. All rights reserved.

MCI-2018-0142-EN-SG · REV B · MC · 07 19 PDF